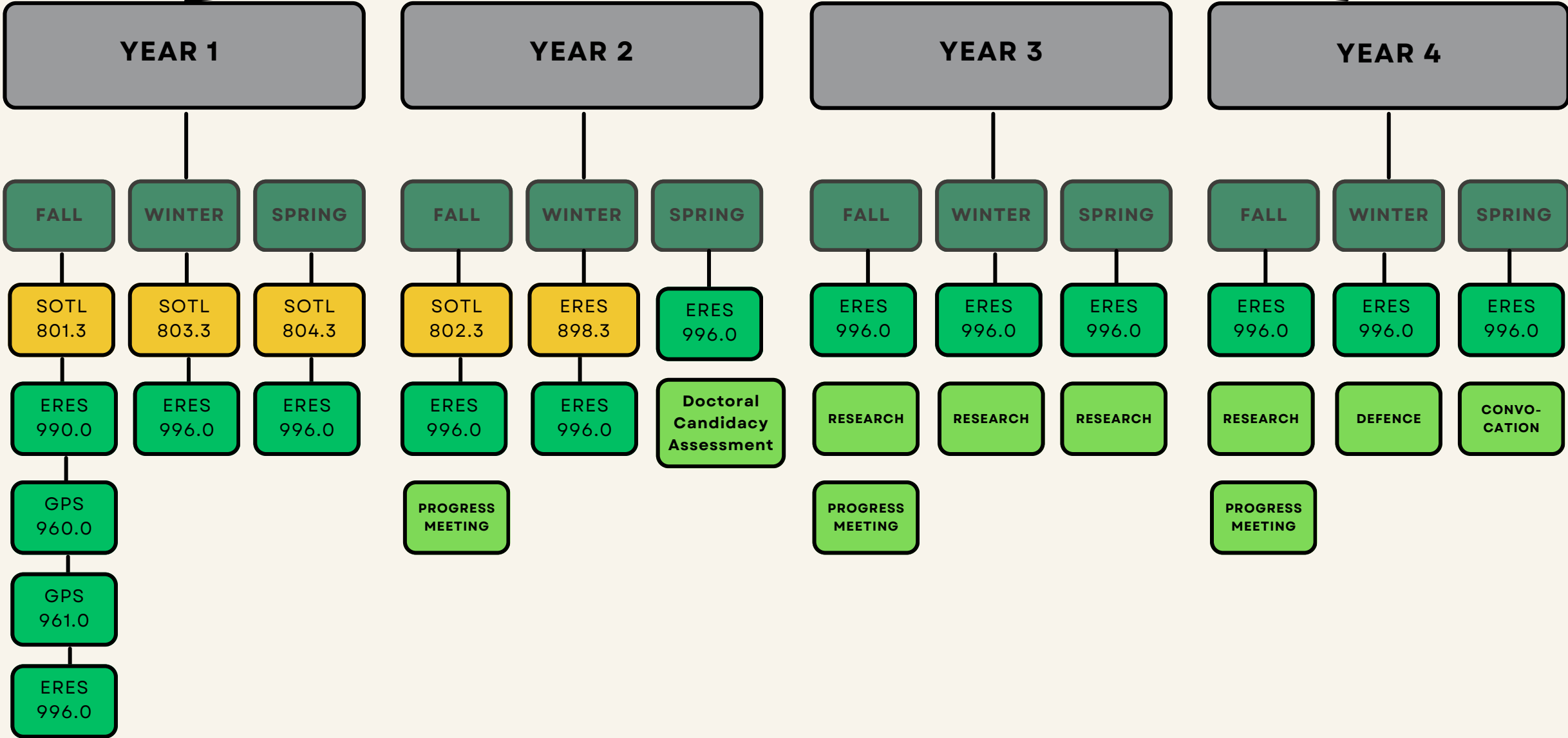


PhD in Education

SOTL FOCUS STUDENTS



REQUIRED RESEARCH COURSES

- SOTL 801.3, Research Methods in the Scholarship of Teaching and Learning
- SOTL 802.3, Historical and Theoretical Foundations in the Scholarship of Teaching and Learning
- SOTL 803.3, Reading Research in the Scholarship of Teaching and Learning
- SOTL 804.3, Research Experience in the Scholarship of Teaching and Learning
- ERES 898.3, Research Lenses: Epistemologies and Ontologies in Higher Education

NON COURSE PROGRAM REQUIREMENTS

- These courses have no credit value, but completion is mandatory for the program.
- ERES 990.0, Seminar in Doctoral Education Research and Practice
 - GPS 960.0, Introduction to Ethics and Integrity
 - GPS 961.0, Ethics & Integrity in Human Research
 - ERES 996.0, Tuition placeholder. Registration must be maintained every term until completion of PhD Defence.